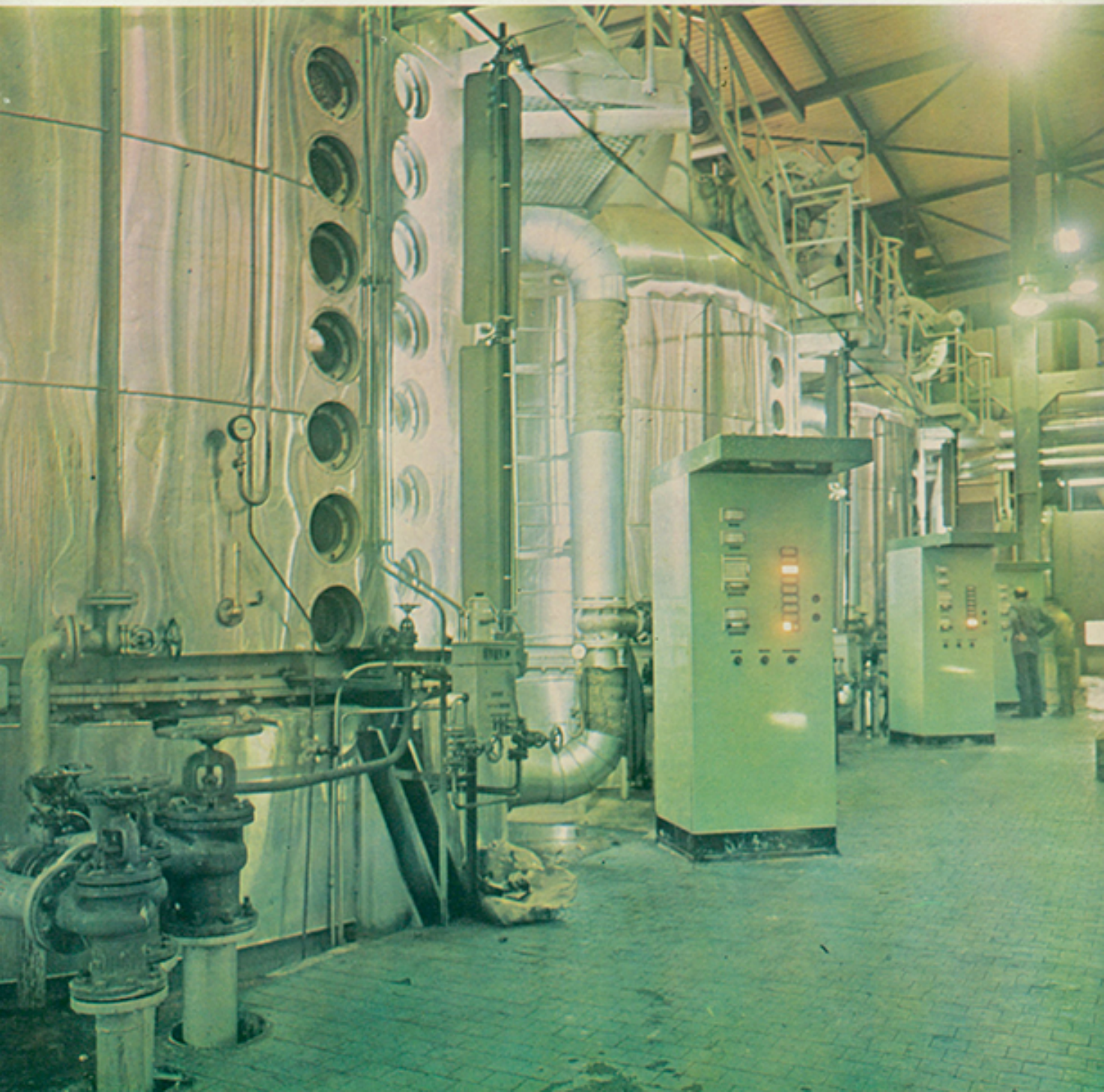




POLISH TECHNICAL REVIEW



6

130/1980



POLISH TECHNICAL REVIEW

SIGMA

PUBLISHERS OF TECHNICAL PERIODICALS AND BOOKS FOR THE CENTRAL TECHNICAL ORGANIZATION (NOT)
00-950 Warsaw, ul. Czackiego 3/5, P.O.B. 1004. Tel: 39-11-34. Issued in English, French, German and Russian

CONTENTS:

FOOD INDUSTRY

ROP CZYCE sugar factory 2

SHIPBUILDING

Passenger catamaran 5

Factory-trawler "Ivan Bochkov" 7

A die for forging cranks of semi-built-up crankshafts
(patent) 8

ELECTRONICS

Laser control equipment 9

Ultrasonic flaw-detectors 10

AUTOMATION AND MEASUREMENT

Measurement of average water flow rate in rivers 11

Three-dimensional measuring machine XYZ 13

Measuring and control equipment for flour-milling and
bakery industries 16

Ultrameter 18

A two-point contact sensor-type rod gauge (patent) ... 18

FARMING MACHINERY

Machines for the harvesting of green forage 19

NEW CHEMICAL PROCESSES

Tarflen polytetrafluoroethylene manufacturing method 21

Manufacture of colourless esters (patent) 21

Silicone agents for the protection of buildings 22

IN BRIEF 4, 6, 8, 23, 24

ECONOMIC SURVEY 15, 18, 22, cover III

NEW BOOKS 24

MINING

Hydraulic under-pressure liquidator in large-diameter
pipes 0-3

The Ropczyce sugar plant

The newest Polish sugar plant built in Ropczyce, of a daily processing capacity of 6000 t beet, is distinguished not only by its size but also by its new process solutions. The storage of about 60% of the thick juice obtained during the production process and its processing into sugar after the end of beet processing has made it possible to extend the time of work of the sugar plant up to 250 days and to achieve substantial investment economies. For details see p. 2.

Passenger catamaran

The Wisła Shipyard in Gdańsk has started building a series of five passenger ships of the catamaran type. The first of them called "Smaragd" will soon be handed over to the shipowner. The article on p.5 discusses in detail the technical solutions and equipment of the ship and the advantages of the passenger catamaran which include, in addition to high stability, the large usable area of the deck.

Machines for the harvesting of green forage

Increasing attention is being paid in Poland to a complex mechanization of farming work. In the last issue of PTR we have presented presses for collecting hay and straw. In the current issue we present combine-harvesters for green forage (p. 19) and No 7 of PTR will carry an article on machines for the preservation of green forage. All these machines are produced in series and are exported.

Programmatic Council: B. Doweyko, L. Drecki, S. Gruzewski (President), J. Gwiaździński, L. Lachowski, B. Łaniewska, L. Olejarczyk, E. Szwarc, K. Warchot, T. Wąsak, A. Hanftwurcel

Editorial staff: A. Hanftwurcel (editor-in-chief), J.L. Toeplitz (assistant editor), I. Chmielewska (assistant editor), S. Hilscher (managing editor), E. Karska, Z. Schellenberg, A. Witkowski, J. Wolf

English version: E. Karska

Graphic layout: F. Barącz

Production manager: A. Dziewulska-Kijas

Advertising section: T. Cupryś

Front cover: Strike pan station in the ROP CZYCE sugar plant, Poland (photo A. Piąstka)

Back cover: A part of the power plant of the m/t Mahn 1300 DWT tank ship built at the WISŁA Shipyard in Gdańsk

Subscription orders should be addressed to the Ars Polona-Ruch, 00-950 Warsaw, P.O.B. 1001, Krakowskie Przedmieście 7 or to one of the representatives of this company abroad. The annual subscription rate (12 issues) amounts to US \$ 25.20 (L. 14.40) or the equivalent in other currencies. In the socialist countries, catalogue prices of the local distribution centres apply.

Photocomposition - Wydawnictwo SIGMA

Printing office: ŁDA - Zakład 1 - Offset, zam. 1324

INDEX No 36915