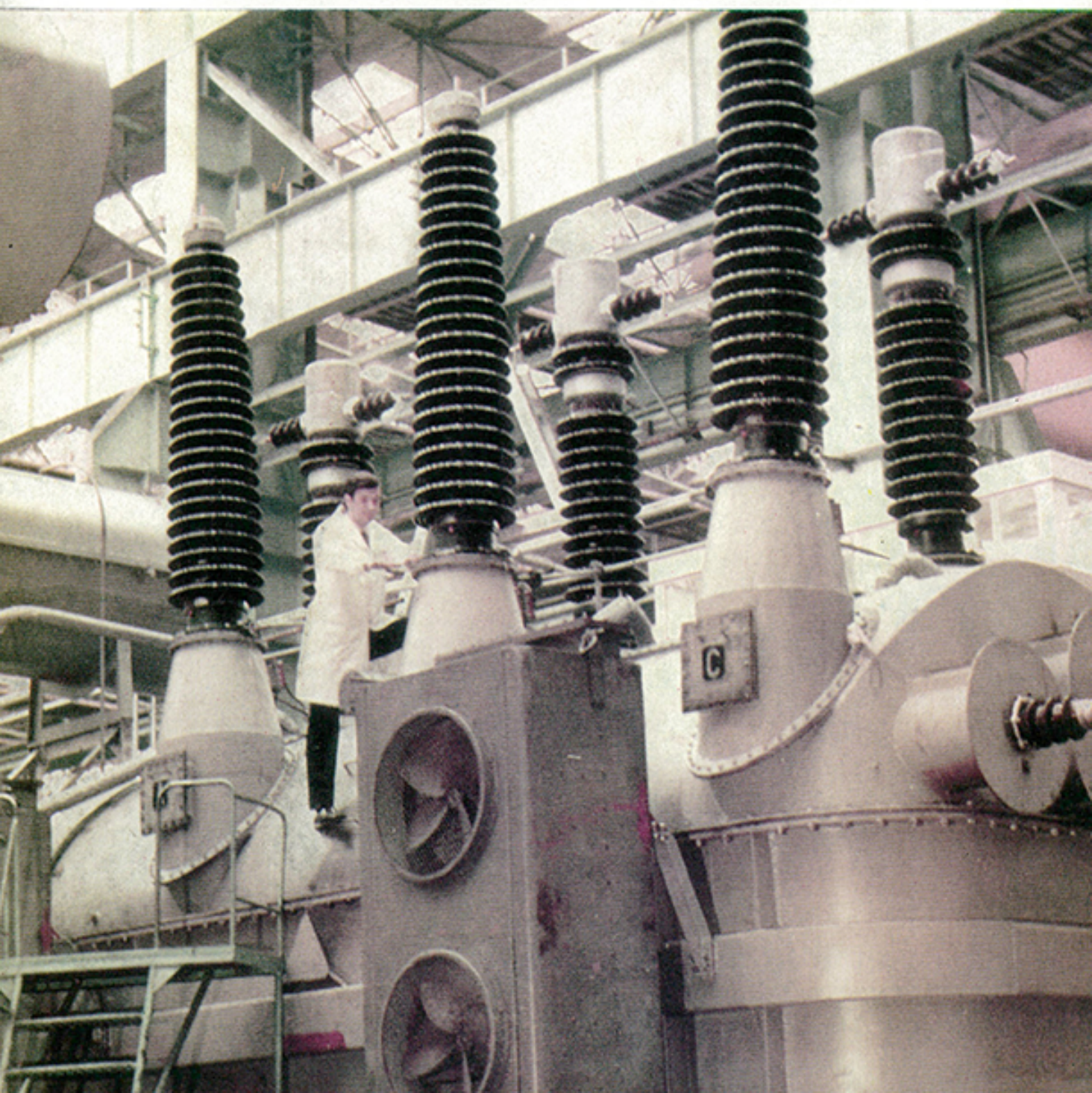




POLISH TECHNICAL REVIEW



9

85 1976



POLISH TECHNICAL REVIEW

PUBLISHERS OF TECHNICAL PERIODICALS FOR THE CENTRAL TECHNICAL ORGANIZATION (NOT)
00-950 Warsaw, · ul. Czackiego 3/5 · P.O.B. 1004 · Tel.: 39-11-99 · Issued in English, French and German

CONTENTS

ELECTRIC ENGINEERING

Export of electrical equipment	2
Transformer-distribution stations and overhead transmission lines	4
Linear tube electric motor	6
Valve type lightning arresters	8

WELDING

Welding of copper with coated electrodes	11
Spot-welding machine	13

SHIPBUILDING

Research and development establishments and design offices of the shipbuilding industry	14
---	----

WOODWORKING

Woodworking machines	17
--------------------------------	----

SUGAR INDUSTRY EQUIPMENT

Plate filters for the sugar industry	19
--	----

PROTECTION OF THE ENVIRONMENT

Dust extraction equipment	20
-------------------------------------	----

PATENTS	23
-------------------	----

ECONOMIC SURVEY	5, 23
---------------------------	-------

NEW BOOKS	22
---------------------	----

IN BRIEF	7, 18, 21, 22
--------------------	---------------

Transformer-distribution stations and overhead transmission lines

The General Supplier ZWAR delivers, erects and puts into operation in foreign countries (through the intermediary of the ELEKTRIM Company) transformer-distribution stations of rated voltages 6, 11, 33, 66, 110, 132, 150 and 220 kV, and transmission overhead lines up to 400 kV. This type of stations and of overhead lines erected in a "turn-key" state by Polish specialists or under their supervision work in many countries including Bangladesh, Egypt, Greece, India, Iraq, Malasia and Pakistan. The article on p. 4 brings details concerning this equipment.

Linear tube electric motor

Linear electric motors, especially of the tube (cylindrical) type are ever more frequently used in electric traction to ensure the longitudinal motion of many auxiliary installations. The Electric Traction Department of the Electrotechnical Institute in Warsaw has designed and tested four main versions of linear tube motors which have proved very successful in driving barriers, railway points, the doors of railway cars and station installations, regulators and circuit-breakers, lifting and unloading devices. The readers will find more details on p. 6.

Welding of copper with coated electrodes

Scientists from the Institute of Welding, Gliwice under the guidance of Professor Jan Węgrzyn developed several years ago an improved method for the welding of copper sheets and its alloys. The copper electrodes Type ECuGT which are being continuously improved find wide applications in industry where they enable to weld both oxygen-free and oxygen-containing copper, of any thickness, without preheating. The method is discussed by its author on p. 11.

Editorial Board: B. Dowejko, L. Drecki, S. Grzegowski (President), S. Katarzyński, F. Kubiczek, Z. Makomski, J. Kostera, Z. Kotarski, S. Werewko, A. Hanftwurcel

Editorial staff: A. Hanftwurcel (Editor-in-chief), J.L. Toeplitz (Assistant editor), S. Hilscher, E. Karśka, Z. Schellenberg, A. Witkowski

English version: E. Karśka

Translations: P. Dytko, J. Dunin-Holecki, J. Chelmiński, J. Radziwiłł, J. Luczaj, H. Stepien

Graphic Layout: F. Barącz

Technical editor: A. Dzielulska-Kijas

Advertising section: T. Pachnowski

Photos inside the issue: Photo-service WHZ

Cover photo: Unit transformer Type 160 MVA – the assembling operations

Subscription orders should be addressed to the "Ars Polona-Ruch", 00-950 Warsaw, P.O.B. 1001, Krakowskie Przedmieście 7 or to one of the representatives of this firm abroad.

The annual subscription rate (12 issues) amounts to US \$ 12.— or the equivalent in other currencies. In the socialist countries, catalogue prices of the local distribution centres apply.

Printing office: Zakłady Typograficzne Łódź. Zam.

INDEX No 37325/36915